

Joint Development Discussion

May 12, 2014



SPOKANE COUNTY



Agenda

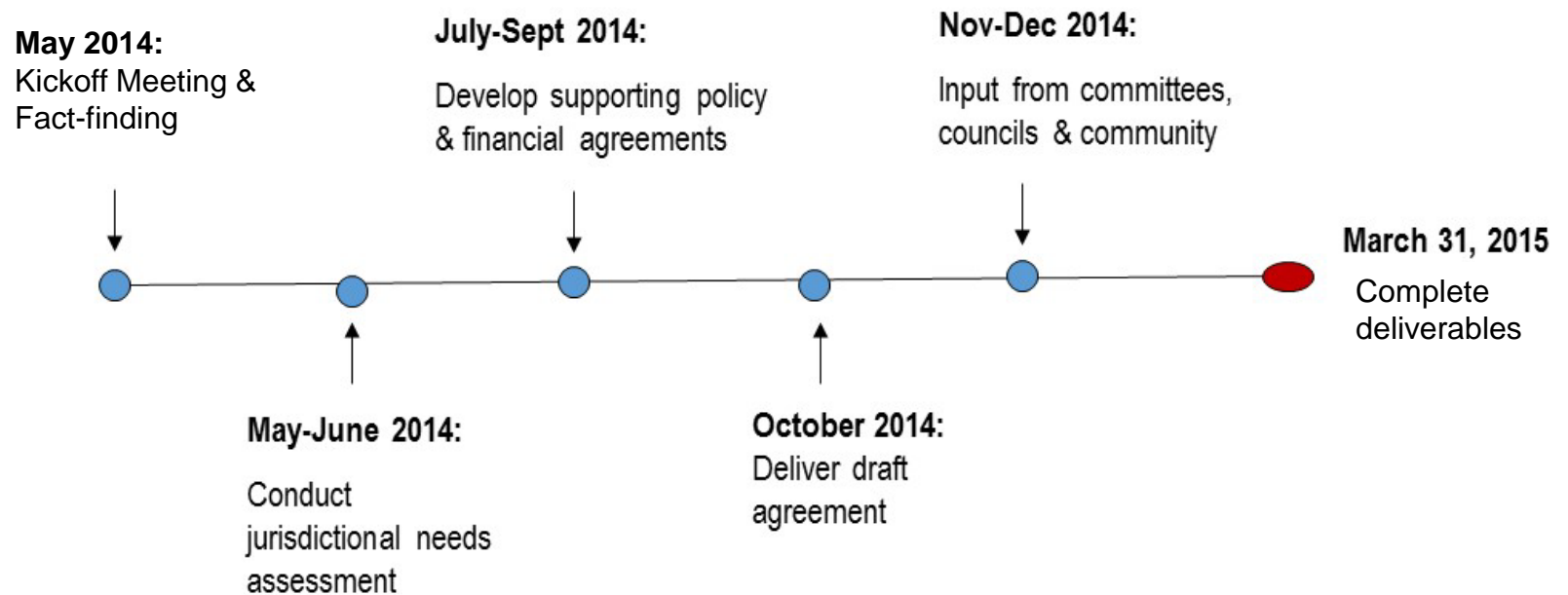
- Welcome – 20 min
- Review Agenda & Agreement – 5 min
- Growth Management Act Review – 35 min
 - City of Spokane
 - Spokane County
- Paying for Infrastructure – 35 min
 - County
 - City
- Next Steps Discussion – 20 min



Joint Development Agreement

- **Develop & implement a model for smart and sustainable growth**
- **Meet in good faith to produce an agreement that benefits both jurisdictions & their citizens**
- **Protect and enhance our neighborhoods, environment, businesses and quality of life**
- **One-year work period**

Timeline



Growth Management Act Review

City of Spokane Staff

Growth Management Act

- **1990 - GMA (RCW 36.70A) enacted in response to rapid population growth and concerns with suburban sprawl, environmental protection, quality of life, and related issues.**
- **The Legislature found that uncoordinated and unplanned growth poses a threat to the environment, sustainable economic development, and the health, safety, and high quality of life enjoyed by residents of the state**

Growth Management Act Goals

- **Grow where facilities exist or can be efficiently provided**
- **Reduce sprawl**
- **Regionally coordinated multi-modal transportation**
- **Affordable housing**
- **Economic development**
- **Protect property owners from arbitrary or discriminatory actions**

Growth Management Act Goals

- **Timely and fair permit processing**
- **Maintain and enhance natural resource industries**
- **Retain open space and enhance recreational opportunities**
- **Protect environment & enhance quality of life**
- **Citizen participation**
- **Adequate public facilities and services**
- **Historic preservation**

County presentations

Growth Management Act Review

Paying for Infrastructure



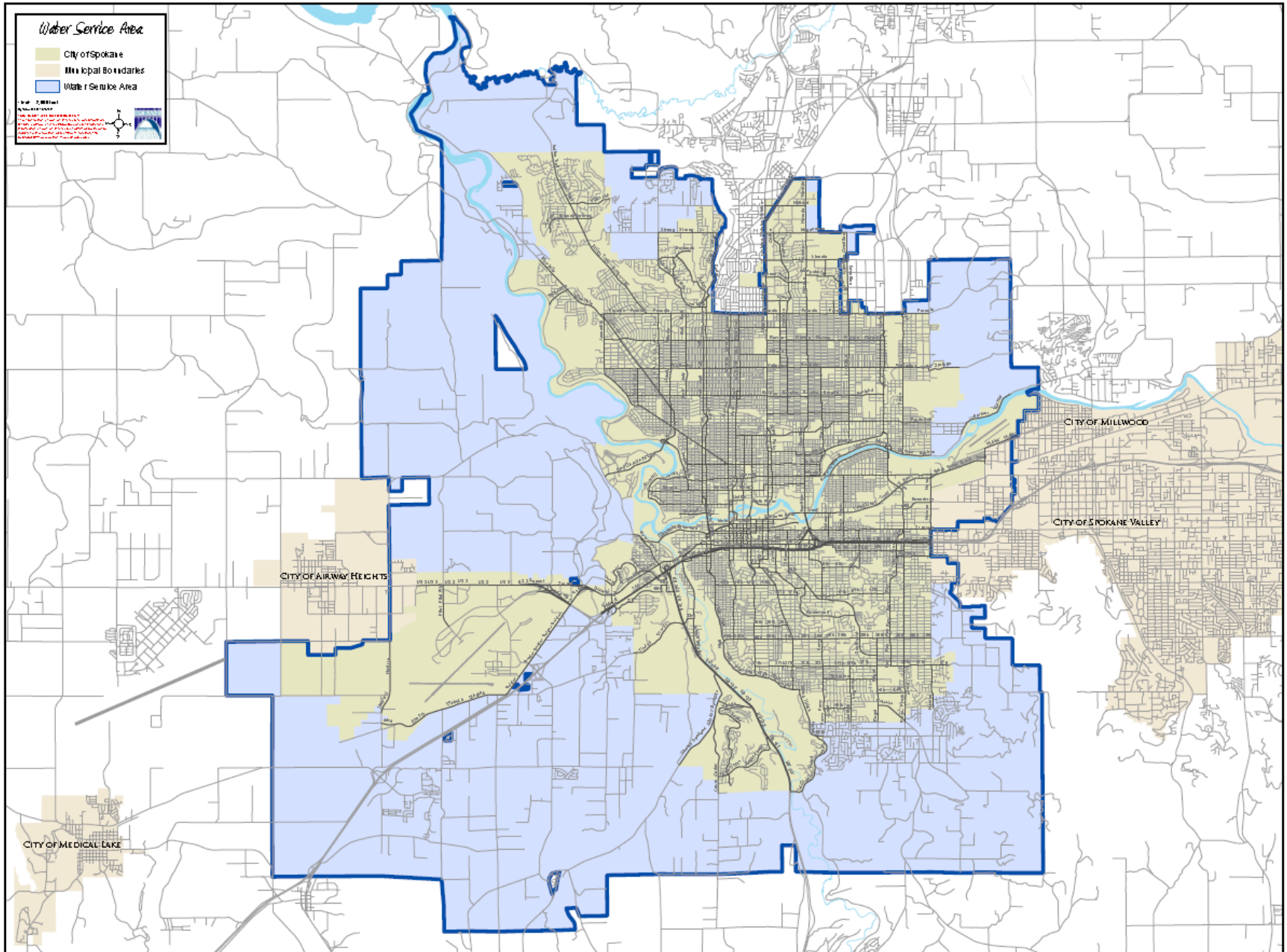
City Utility Infrastructure

Rick Romero, Director, City of Spokane Utilities Division

Utilities



City of Spokane Water Service Area

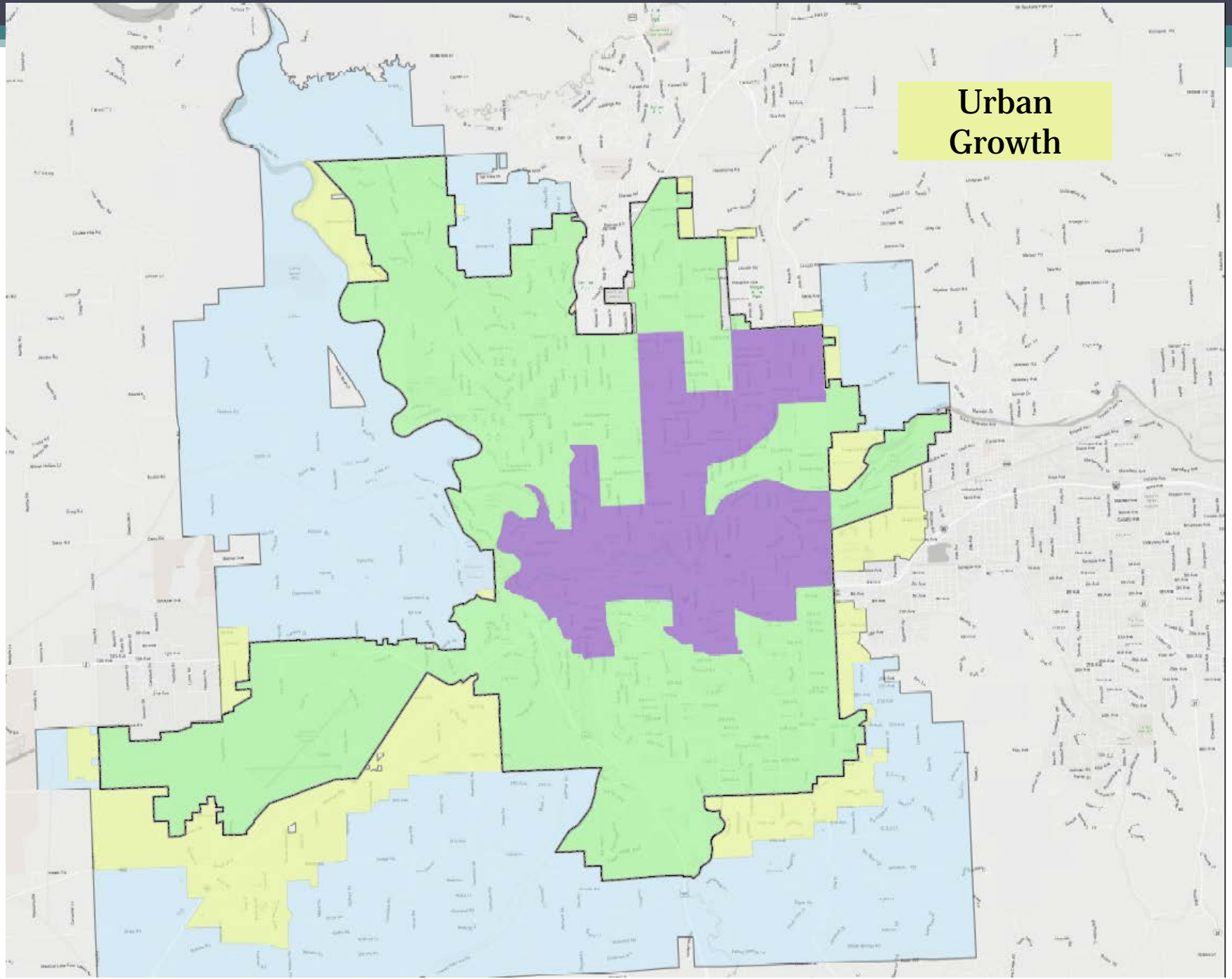


As a Water Purveyor,

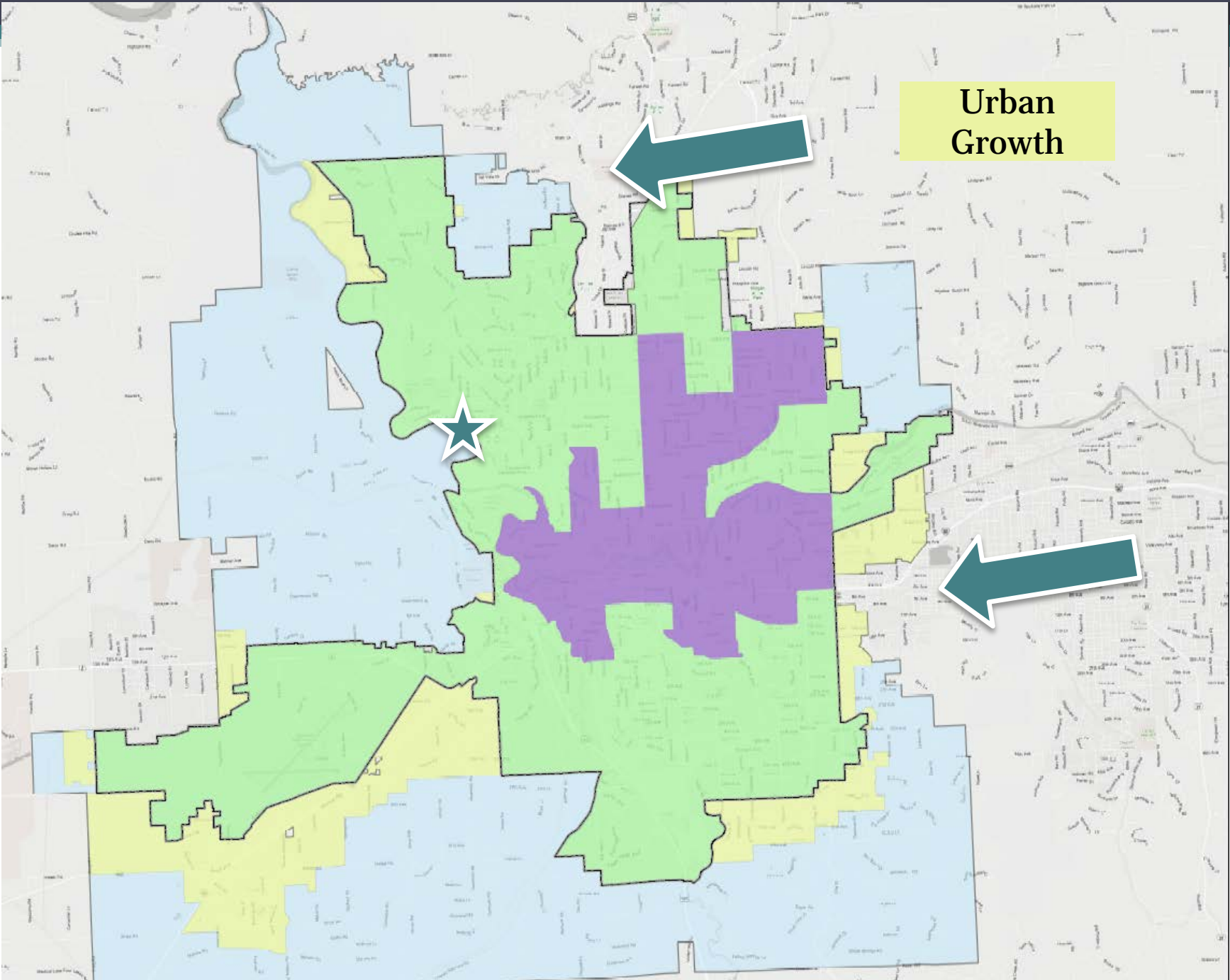
The City has a duty to provide retail water service to all new service connections within its retail service area if:

- a) It can be available in a timely and reasonable manner;
- b) There is sufficient water rights to provide water service;
- c) There is sufficient capacity to serve the water in a safe and reliable manner; and
- d) It is consistent with the requirements of the local and state laws.

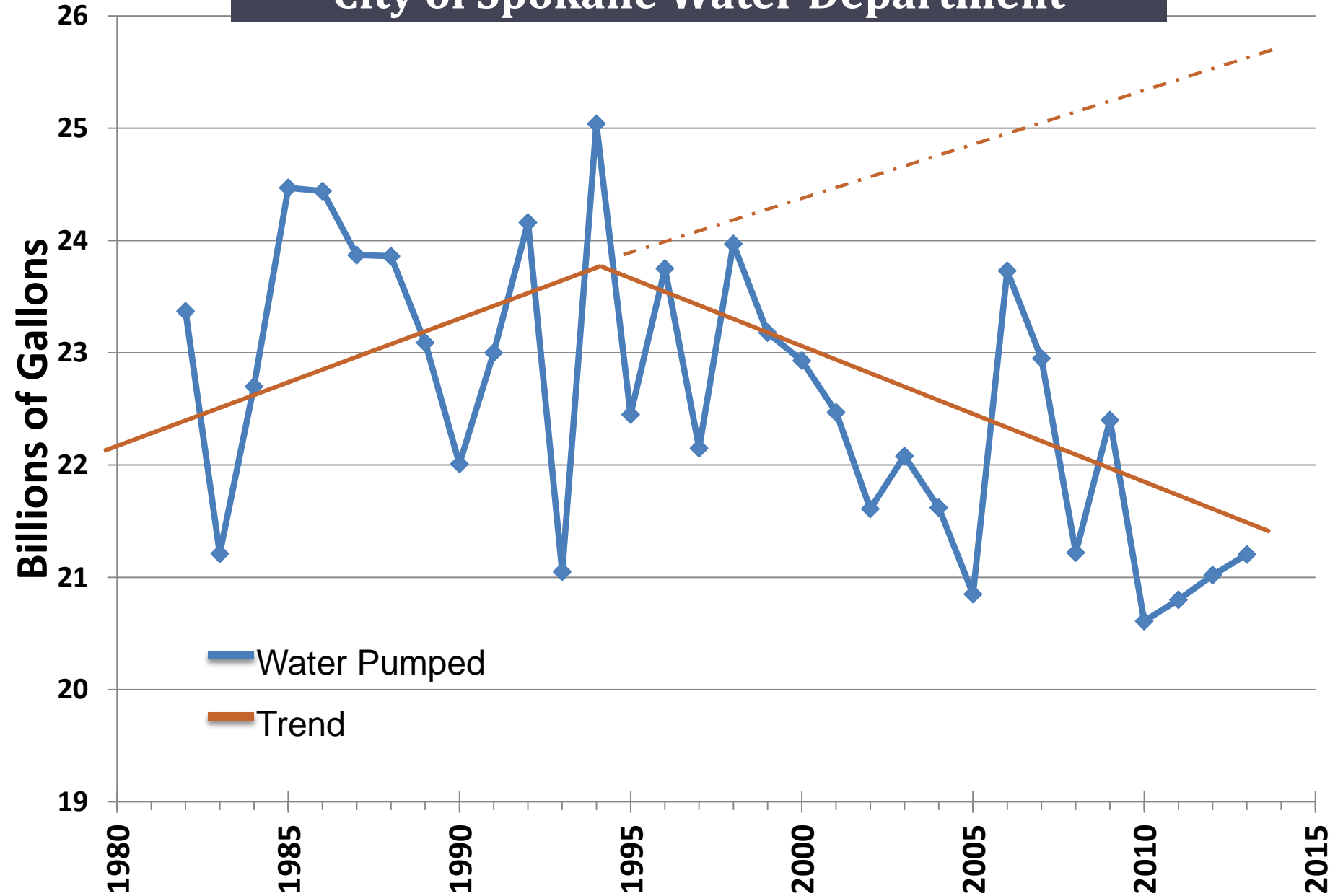
**Urban
Growth**

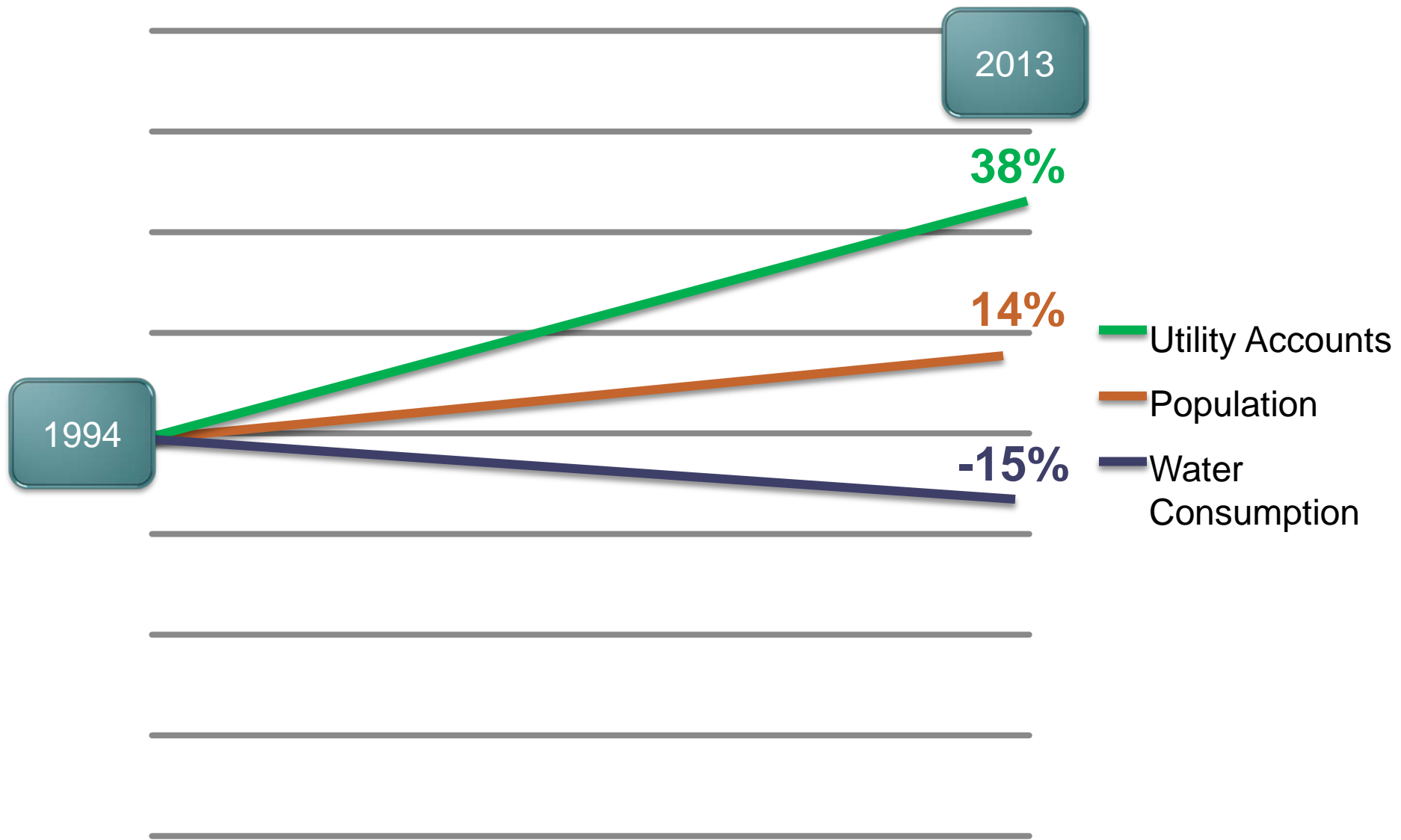


**Urban
Growth**



Annual Water Pumped in Billions of Gallons City of Spokane Water Department





2013

38%

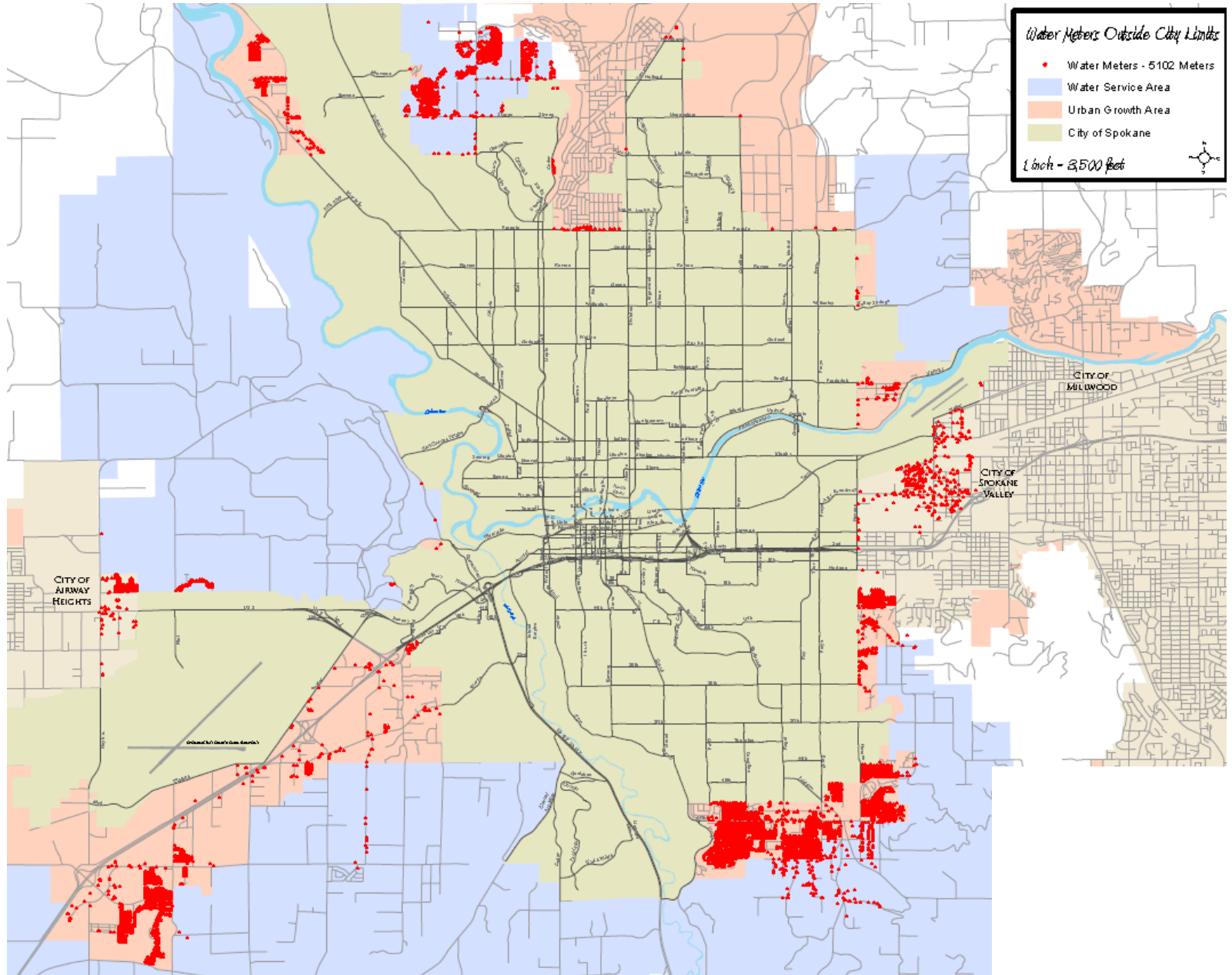
14%

-15%

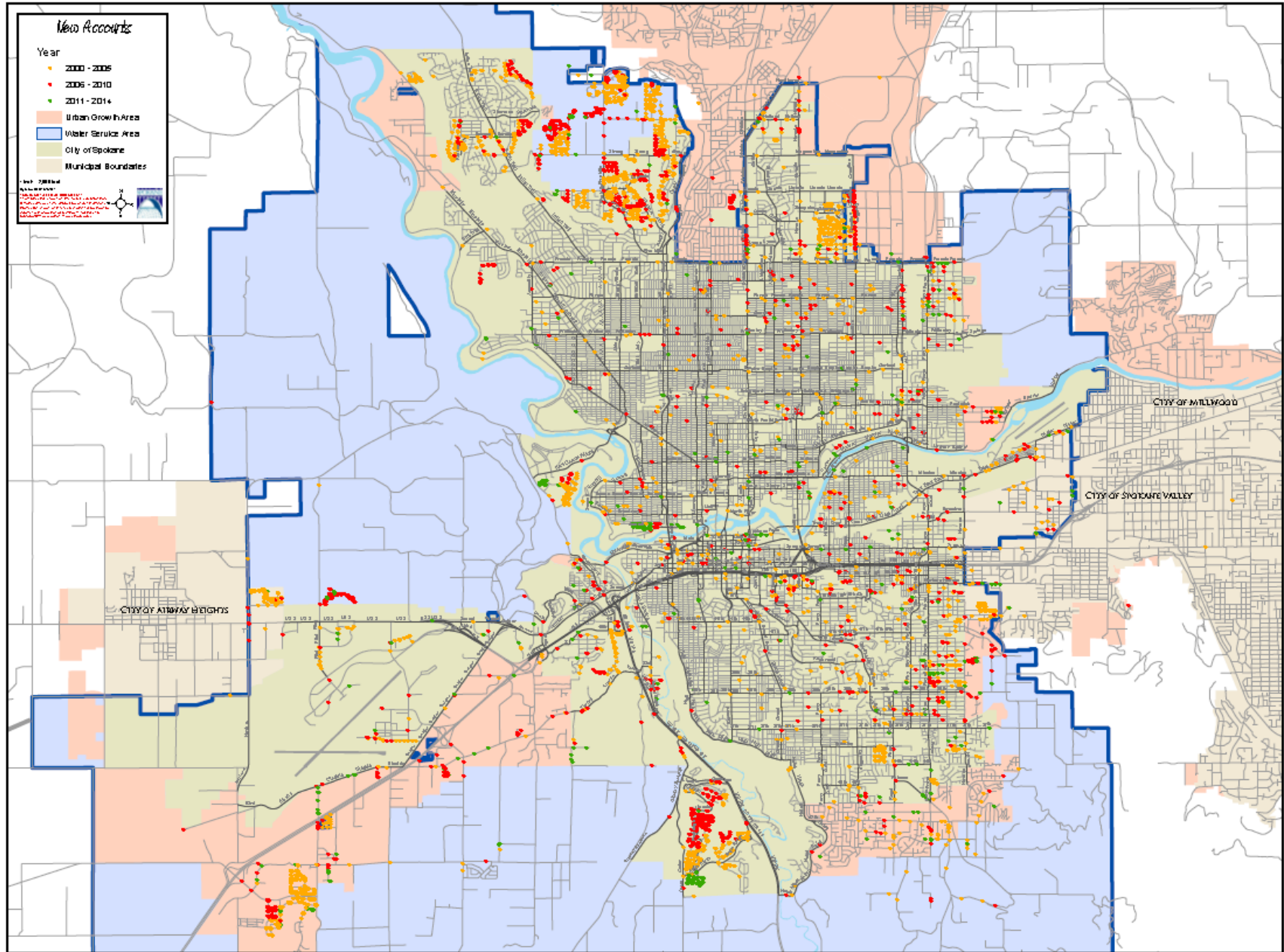
1994

- Utility Accounts
- Population
- Water Consumption

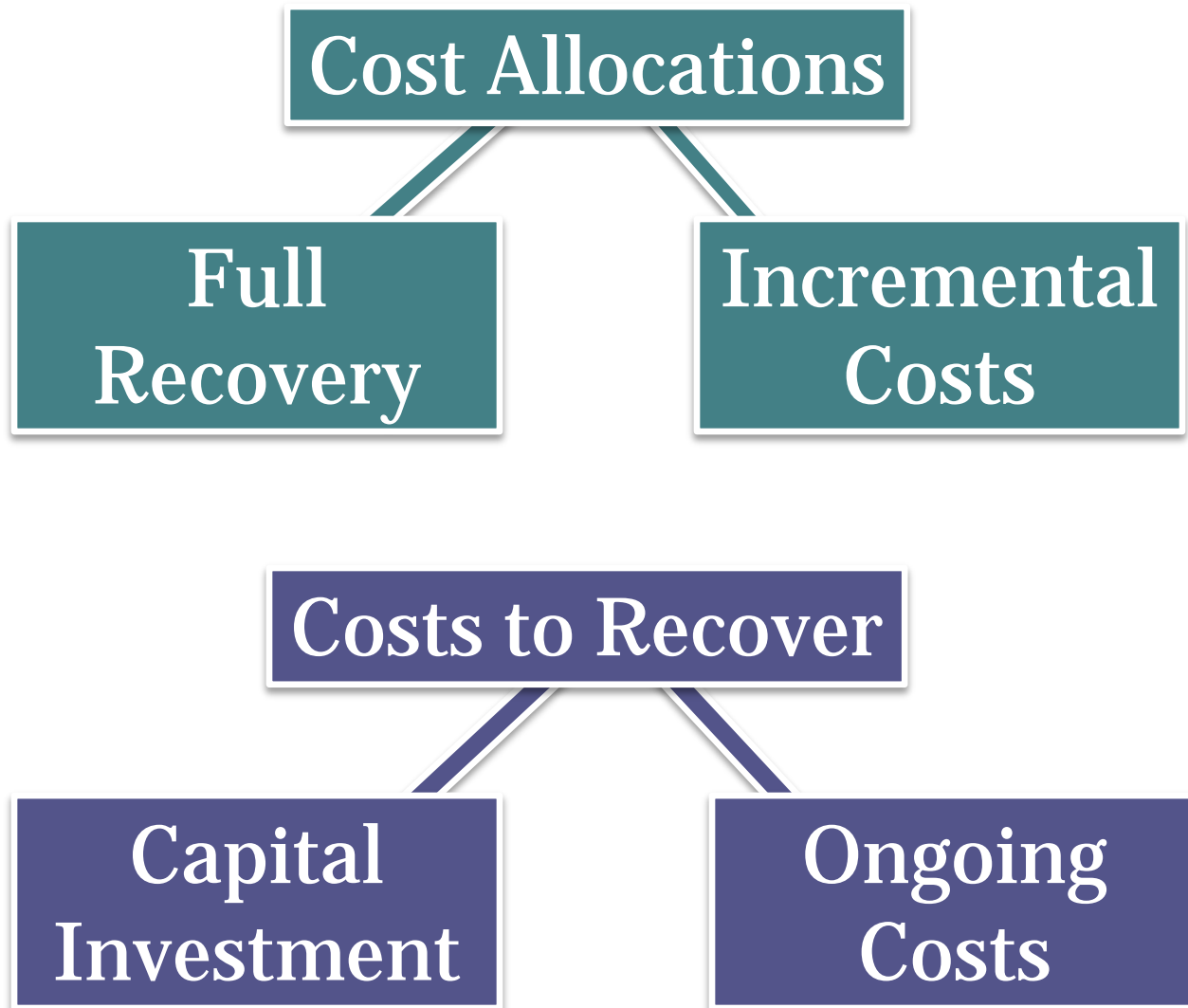
Accounts Outside City



New Accounts 2000-2014

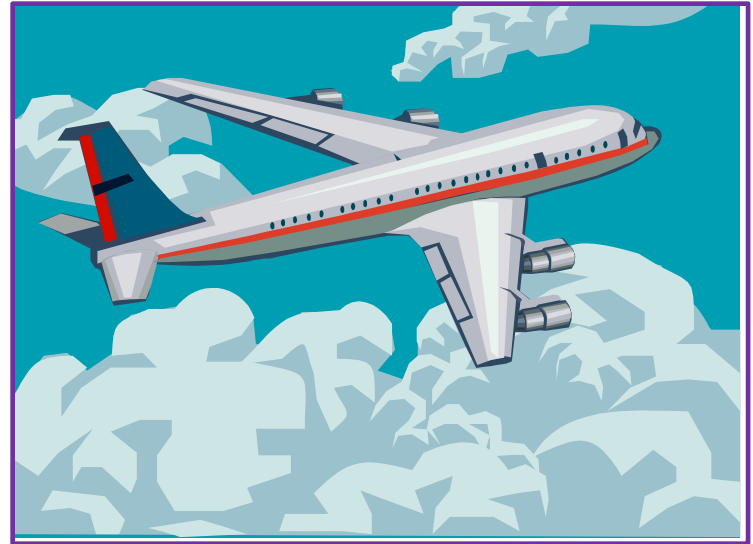


Cost Models



Airline Model

- Investment in Fixed Costs
- Full flights
 - Utilities can't cancel flights when tickets sales are low.



General Facilities Charge

1. Who Pays GFC's?

New Service connections outside Empowerment Zone
Upgrades of existing services

2. What is the GFC price?

Based on size of connection
Paid when development occurs

3. Purpose:

Future expansion of backbone infrastructure

2014 Utility Rates

Wastewater, Water, Stormwater:

Charge	Inside City	Outside City
Wastewater	\$ 27.27	\$ 54.55
Water Service	\$ 14.50	\$ 21.76
Stormwater	\$ 3.84	No charge
Integrated Capital	\$ 25.60	\$ 29.33

Water Consumption:

Usage	Units	Inside City	Outside City
First 4,500 gallons	1- 6 units	\$ 0.28	\$ 0.42
Next 3,000 gallons	7-10 units	\$ 0.59	\$ 0.88
Next 26,100 gallons	11-45 units	\$ 0.79	\$ 1.18
Over 33,600 gallons	Over 45 units	\$ 1.01	\$ 1.52

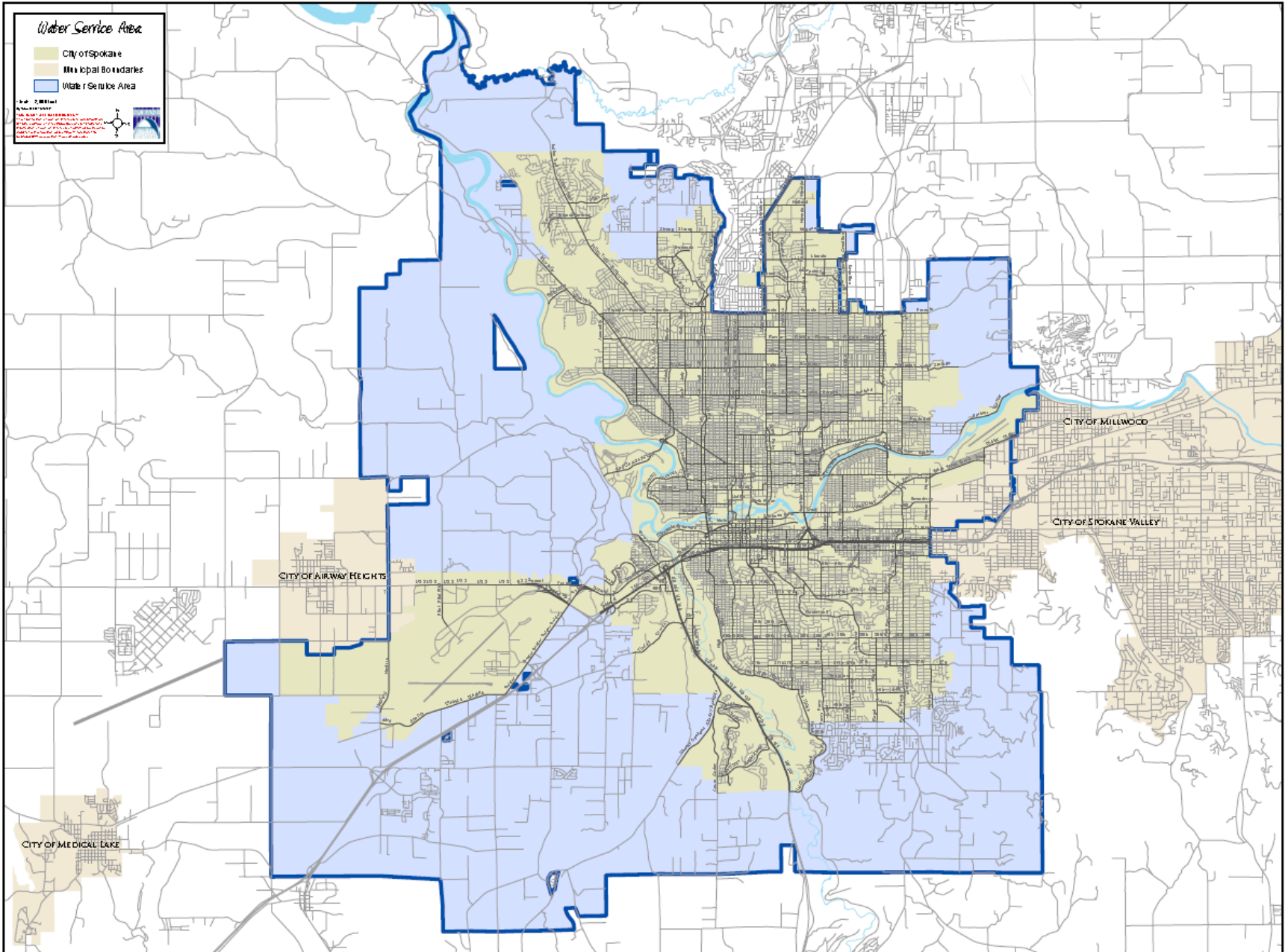
Consumption is based on units, 1 Unit = 748 gallons. Rate is per Water Unit

Solid Waste Collection

Service Area: City Limits

Type	Rate
32 Gallon Refuse Cart	\$15.25
68 Gallon Refuse Cart	\$27.62
95 Gallon Refuse Cart	\$40.32
Yard Waste Recycle Cart	\$14.57

Regional Water Service Area



Next Steps

- **Next meeting**
 - **Date**
- **Suggested agenda topics for next meeting**
 - **Factors of Smart Growth**
 - **Transportation Planning – SRTC**
- **Going forward**
 - **Proceed with fact-based discussions**
 - **Develop policies/strategies to achieve results**
- **Staff assignments**



Thank you!

Members of the public can email
comments & suggestions to:

growingspokane@spokanecity.org

